

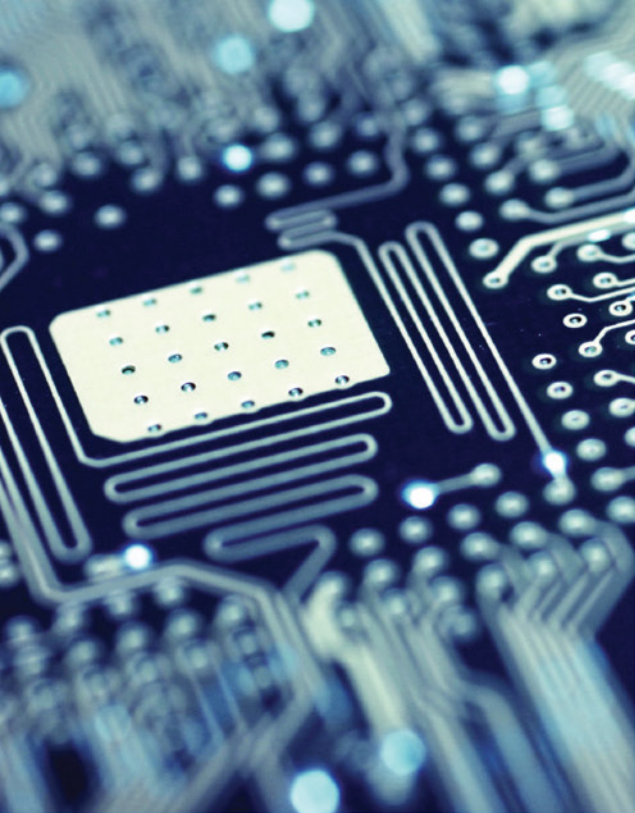


INVEST IN SALISBURY



Economic Performance

January to March 2019



Salisbury, the ideal business base

The City of Salisbury shines as one of Australia's most successful business regions, outperforming the State average for attracting investment and creating jobs over the past two decades.

We offer affordable commercial land, excellent transport infrastructure, a highly skilled workforce and access to world leading research facilities.

Salisbury's workforce has always boasted an above average rate of trade qualifications. In recent years, new developments such as Mawson Lakes have provided employment opportunities and a lifestyle which have attracted greater numbers of university graduates to the city.

The City of Salisbury is renowned as one of the most progressive and business friendly local authorities in the country. A highly efficient, streamlined development and planning process, combined with a progressive attitude means that most commercial developments are approved within 21 days and major projects within three months.

A dedicated Economic Development team is ready to listen to your business needs and provide advice and assistance to help you take advantage of all that Salisbury has to offer.

Salisbury. It makes good business sense.

Salisbury is the fourth largest local economy in South Australia by Gross regional Product and third largest in relation to local jobs

Headline economic figures include:

- Gross Regional Product of **\$6.49 billion**
- **6,818** actively trading businesses providing **53,718 jobs**
- **70,211** residents in the workforce with an 8% unemployment rate (down from 8.5% for the same period in 2018).

Investment Snapshot

Approximately **\$2.6 billion** of investment (minimum value of \$5 million per project) across 38 projects is currently underway or proposed within Salisbury.

- **\$440 million** of projects proposed but not yet commenced including Northern Adelaide Food Park at Edinburgh Parks, Raytheon facility in Technology Park, District Outlet at Parafield Airport and the DSTG High Performance Computer Centre.
- **\$90 million** of projects lodged for development assessment (either with Council or the State Government) including DeLorean bioenergy plant, Temple College classrooms, SA Water solar panels at Bolivar).
- **\$250 million** of projects that have received development approval but are yet to commence including South Australian Produce Market expansion at Pooraka, Aldi – Salisbury, 10 storey mixed use development at Mawson Lakes, GIC Kings Point retail and leisure precinct development, Edenfield Family Care and St Basil's aged care.
- **\$1.85 billion** underway including the Northern Connector, Edinburgh Defence Base upgrade, Salisbury Community Hub, Sigma Pharmaceuticals state distribution centre, Huhtamaki distribution centre, Veroguard manufacturing facility, Metro Parade mixed use development, Helping Hand Aged Care, various defence contracts and school upgrades for Endeavour College, Thomas Moore College and Bethany School.
- **\$600 million** of recently completed projects including defence base training facility upgrades, Mayne Pharma expansion, Saints Road Shopping Centre, Haulmark manufacturing facility and Mawson Lakes Supermarket & Student Living project.



\$6.49 BILLION
Gross Regional
Product



6,818
Businesses
in Salisbury

Polaris Centre Activity Snapshot

The Polaris Business and Innovation Centre is the City of Salisbury's hub for the provision of business support, urban planning and economic development services.

Headline figures include:

- **Investment Attraction** – currently working with **20 firms** on relocation proposals
- **Business Expansion** – working with **6 firms** on expansion plans
- **Business Information** – provided to **617 individual firms** during 2018-19 financial year
- **Start Up Support** – provided to **73 intenders and early stage firms** during the 2018-19 financial year
- **Willingness of Polaris Clients to refer others to Polaris** – 91%.

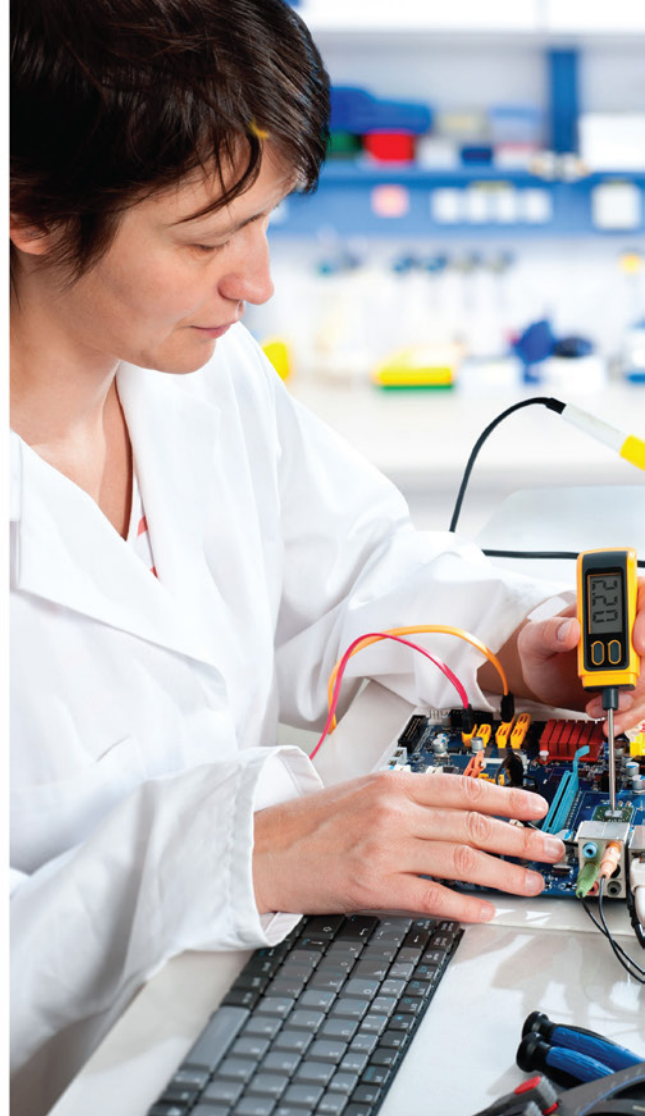
Recent media feedback in the past three months has included commentary such as:

- *"Our session was invaluable and I left with a long list of practical suggestions to improve the online presence of my business"*
- *"I left feeling excited and more knowledgeable in respect to our website and social media presence"*
- *"Really genuine in his desire to help the business. He had very practical, easy to implement ideas. I got a lot of good ideas and advice out of the session"*
- *"Great to get one on one advice from someone who knows how tough business can be. I left with clarity and motivated to move my business to the next level."*

Development Applications

Since the start of the financial year, **\$145.5 million** worth of development applications were approved by Council. This compares to **\$100 million** for the same period in the previous financial year. Larger commercial developments (value exceeding \$5 million) lodged or approved in the past quarter include:

- **\$6 million** - warehouse at Pooraka



Announcements and initiatives

January to March 2019

During the past three months a range of announcements have been made or media articles published including:

- New hi-tech facility at UniSA's Mawson Lakes Campus will support defence and space SMEs – A new \$2 million collaboration facility will be built at Mawson Lakes. The university will invest \$1 million in the new "Industry 4.0 Testlab", with up to \$1 million in additional funding provided by the Federal Government
- The Yoghurt Shop goes global - now exporting from Burton to Brunei, Singapore, Hong Kong, and, all things going to plan, Shanghai.
- The Gums, a \$14 million centre for people with disabilities, opens in Salisbury.
- Haulmark Trailers opens \$15 million manufacturing facility in Edinburgh Parks.
- Supashock wins distribution deal on eve of new V8 Supercars season - Edinburgh headquartered Supashock signs agreement that will see Erebus Motorsport become a key distributor for Supashock's motorsport products, including shock absorbers, for vehicles competing in state, national and international categories.
- Raytheon Australia Centre for Joint Integration announced for Technology Park – The centre is a \$50 million investment by Raytheon Australia and will incorporate an office block and a specialised integration facility.
- Walker Corporation brings forward Stage 2 release of Vicinity Industrial Estate due to strong demand for industrial land. Recent purchasers at Vicinity include Hobson Engineering's acquisition of 2.7ha, Proactive Property's purchase of 6,619sqm and Buildtec's 1.4ha buy.
- Ground breaking for Huhtamaki's new facility at Pooraka
- BAE Systems Australia and the Advanced Manufacturing Growth Centre will use Industry 4.0 techniques to contribute to the world's biggest defence program, the Joint Strike Fighter.
- Kanga Coachlines acquires Farnham Roadlines

For further information please contact:

City of Salisbury, Innovation House East,
Park Way, Technology Park, Mawson Lakes 5095 | PO Box 8, Salisbury, SA 5108
Phone: +61 8 8260 8205 | Email: invest@salisbury.sa.gov.au



find out
MORE

| www.investsalisbury.com.au